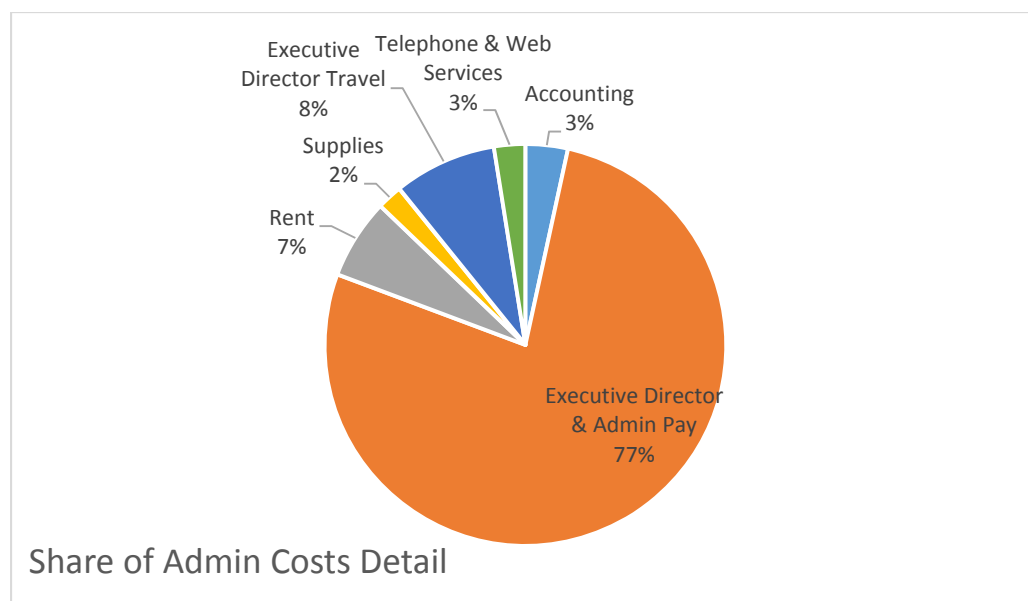
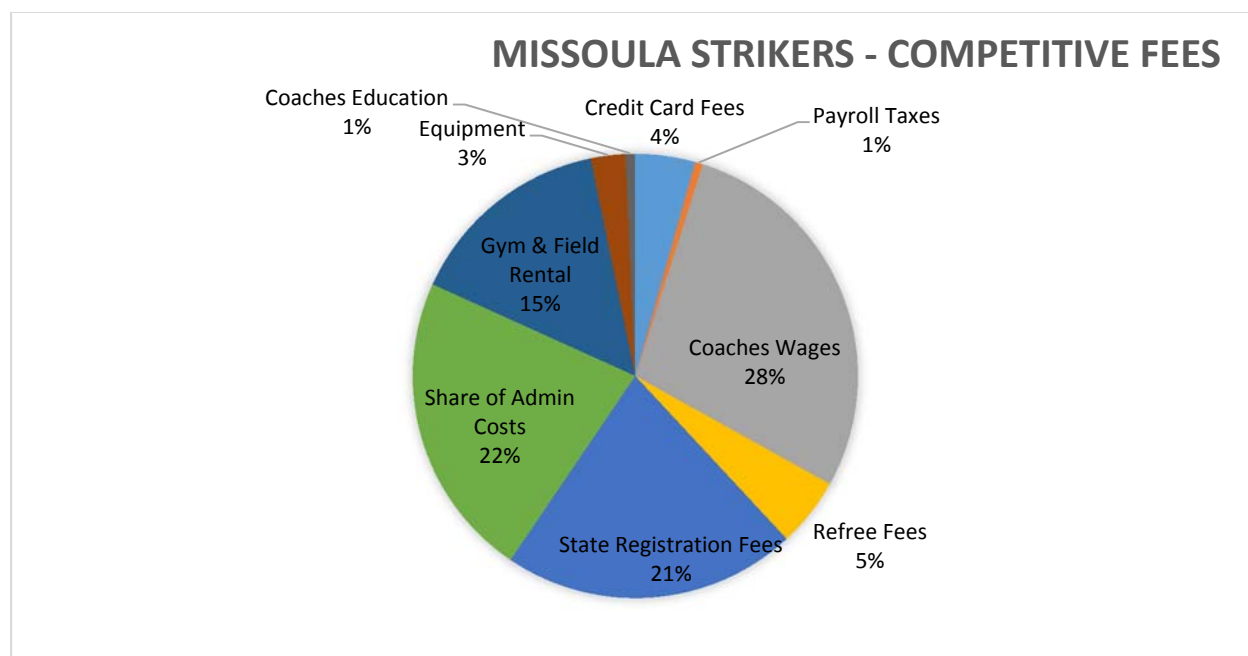


Where do our player fees go?

The below information is in direct response to parent requests for more transparency related to the Missoula Strikers Association financial information. The below graphs detail the FY 2015 expenditures related to the competitive program. Additional notes have been included below, for more information please contact Ross McMonies, Executive Director.



Notes: In FY 2015, the Missoula Strikers Association paid each head coach \$1,600 and each assistant coach \$550. Additionally, the Organization paid ~\$18,500 for field and gym rentals. MYSA (Montana Youth Soccer Association) charges several different fees per player, per team and per coach. The club is charged both the Competitive Player Fee & the Play Fee When Assigned to a Team for each player. Total share of admin costs = \$25,406.53. This includes 70% of the Executive Director's salary (\$30,000 for FY 2015 – fulltime position).